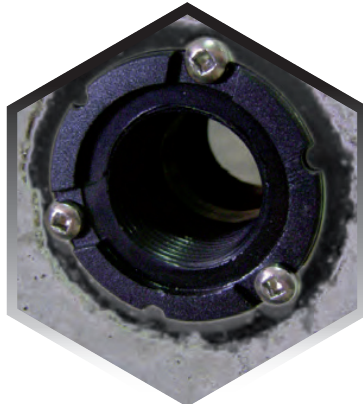
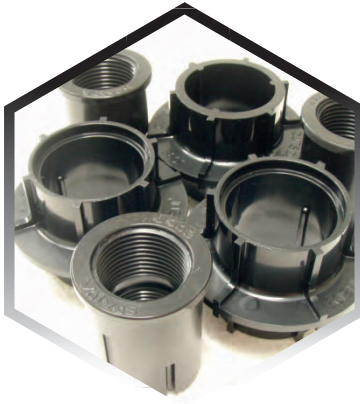


# Jobe Multifit Inlet



**ACCESSORIES**

# MULTIFIT INLET FITTINGS

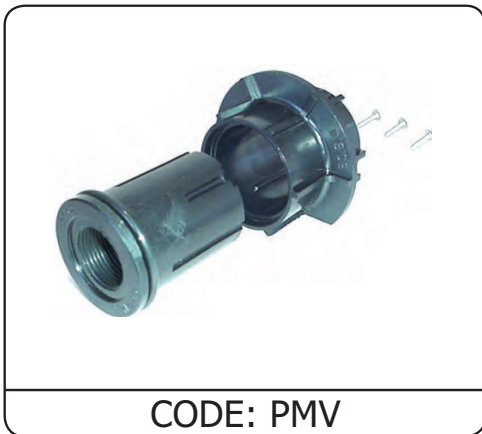
## PRODUCT INFO



# Jobe Multifit Inlet

### Description

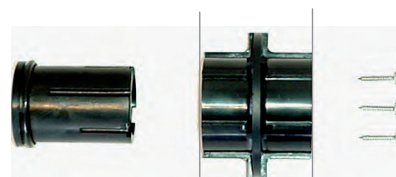
For use by Concrete Trough Manufacturers. The outer sleeve is cast into the trough wall when the trough is made. 20mm (3/4" bsp) & 25mm (1" bsp) inserts are available to fit into the sleeve.



CODE	DESCRIPTION
MIF5520 MIF5525	Multifit Inlet Fitting (55mm Fitting Width) 20mm Thread 25mm Thread
MIF4720 MIF4725	Multifit Inlet Fitting (47mm Fitting Width) 20mm Thread 25mm Thread
PARTS	
MIP12 MIP14 MIP11 MIP10	O'Ring Screws Square Drive Bit (Fits Battery Drill) Holding Tool

### Installation

1. Position outer flange in mould and cast into trough.



2. Select either a 20 or 25mm insert fitting and slide into the outer flange from the inside of the trough.

3. Screw the 3 locking screws provided in from the outside of the trough.

ACCESSORIES